



Jetwing  
KANDY GALLERY  
A Luxury Reserve

*Your abode in the mystic hills*





## INTRODUCTION

Having withstood the onslaught of three invading nations for centuries, until its fall in 1815, Kandy - the last royal kingdom of the island nation - has witnessed it all. Nestled in a wide plain surrounded by magnificent mountains, Kandy is steeped in tradition and history and is home to some of the most iconic attractions of the country, such as the Temple of the Tooth Relic and the Kandy Lake. Weaving together the rich heritage of the Kandyan era and the modernity of the present times, Jetwing Kandy Gallery has an unrivalled setting to immerse in all that the historic city of Kandy has to offer. Be pampered like royalty in our 26 plush rooms and suites, indulge in exquisite cuisine, revel in the breathtaking views of the hill country and delve into the vibrant culture of the last royal kingdom in absolute luxury.

## LOCATION

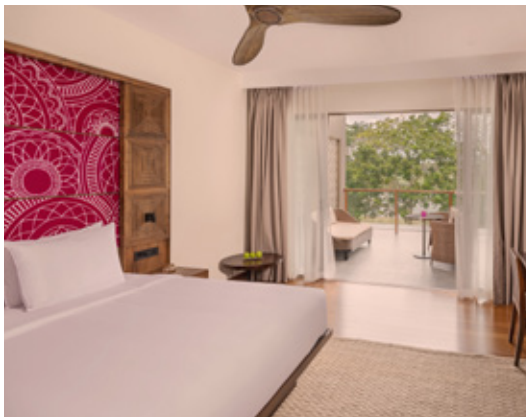
Jetwing Kandy Gallery is located in Haragama, about 120 km from the Bandaranaike International Airport (a 3-and-a-half-hour drive) or 130 km from the capital city of Colombo (a 4 and a half hour drive or 3 hour train ride). The journey to Kandy is through stunning landscapes and spectacular sceneries of majestic mountain ranges, lush tea estates and more. The hotel is spread across an expanse of 1.9 acres.



## SUITES AND ROOMS

Set away from the hustle and bustle of the vibrant city of Kandy, Jetwing Kandy Gallery boasts 04 Luxury Double/Twin Rooms, 12 Luxury Queen Rooms and 10 Suites, complemented with modern luxuries and around-the-clock butler service. Opening up to spacious terraces or balconies, each room offers awe-inspiring views of the Mahaweli river and the hill country.

Total number of rooms and suites – 26



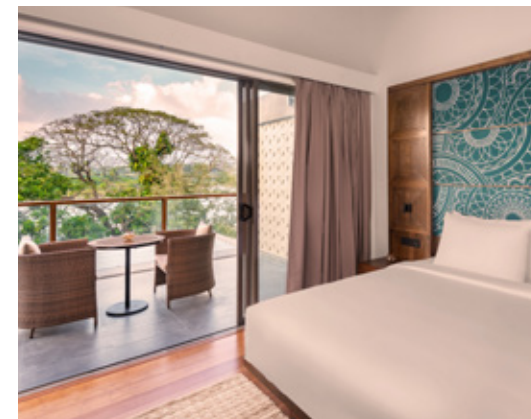
**Luxury Double/Twin Room**  
**04 Rooms**



**Luxury Queen Room**  
**12 Rooms**



**Gallery Suite**  
**04 Suites**



**Kandyan Suites**  
**06 Suites**

# LUXURY DOUBLE/TWIN ROOM

Spacious and elegantly designed, these 12 rooms feature two queen-sized beds, a luxurious en-suite bathroom with a bathtub and rain shower, and modern comforts for a relaxing stay.

NUMBER

04

AREA

Bedroom - 27.3 sqm  
Bathroom - 7 sqm  
Terrace - 17.7 sqm  
Total - 52 sqm





## LUXURY QUEEN ROOM

Wake up to mesmerising views of the Mahaweli River from your balcony or verandah. Thoughtfully appointed, this room offers comfort, style, and effortless charm.

NUMBER

12

AREA

Bedroom - 36.1 sqm

Bathroom - 12.2 sqm

Balcony/Verandah - 11.7 sqm

**Total - 60 sqm**



# GALLERY SUITE

A sanctuary of sophistication, our Gallery Suites boast a private balcony with a Jacuzzi, indulgent interiors, and stunning river views, promising an unparalleled luxury experience.

NUMBER

04

AREA

Bedroom & Living room - 30.5 sqm  
Bathroom - 7.8 sqm  
Terrace - 22.8 sqm  
Closet - 5.9 sqm  
**Total - 67 sqm**





# KANDYAN SUITE

An epitome of grandeur, this suite features a spacious living area, a deep-soaking bathtub, and a private butler, offering you regal comforts amidst breathtaking Kandyan landscapes.

NUMBER

06

AREA

Bedroom & Living room - 51.7 sqm  
Bathroom - 11.1 sqm  
Terrace - 17.7 sqm  
Closet - 7.2 sqm  
**Total - 87.7 sqm**



## SUITE AND ROOM FACILITIES

- Central air-conditioning with individual temperature controls
- Electric power - 220v to 240v
- Telephone with IDD facility
- 40" TV with international and local channels
- Hair dryer with electric shaver socket
- Mini bar with glassware
- Complimentary tea/coffee making facility with a cafetiere (French press)
- Bathroom with a bathtub and separate shower enclosure, with hot and cold water
- Custom-made toiletries created by Link Natural
- Bottled water
- Electronic safe
- Iron and ironing board

## ADDITIONAL FACILITIES FOR THE SUITES

- Separate Seating Area for all Kandyan Suites
- Outdoor Jacuzzi for all Gallery Suites

## OTHER FACILITIES ON REQUEST

- Baby cots
- Child minding services

## GUEST FACILITIES

- Personalized butler service
- 24-hour room service
- Daily housekeeping
- Free Wi-Fi
- Laundry service
- Doctor on call
- Parking facilities
- Mailing facilities







## DINING

- Riverscape – Main Restaurant & Bar (Indoor & Outdoor Seating)
- The Royal Table – Private Dining

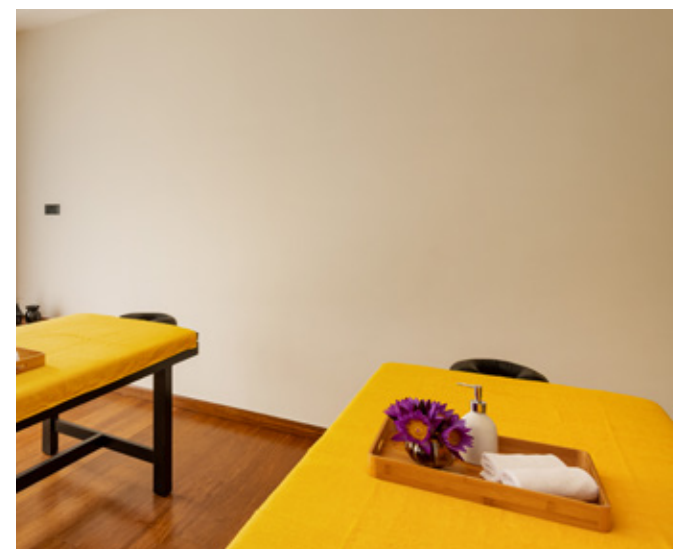




## WELLNESS

At Kandy Gallery, the luxuries of our hillside haven offer the perfect retreat from the everyday. As you take in the serenity of the Mahaweli River and the timeless charm of Kandy, indulge in an array of amenities designed to nurture your well-being—ensuring harmony for your mind, body, and soul at our home of Sri Lankan hospitality.

- Swimming pool
- Balinese Ayu Spa
- Bicycle rides



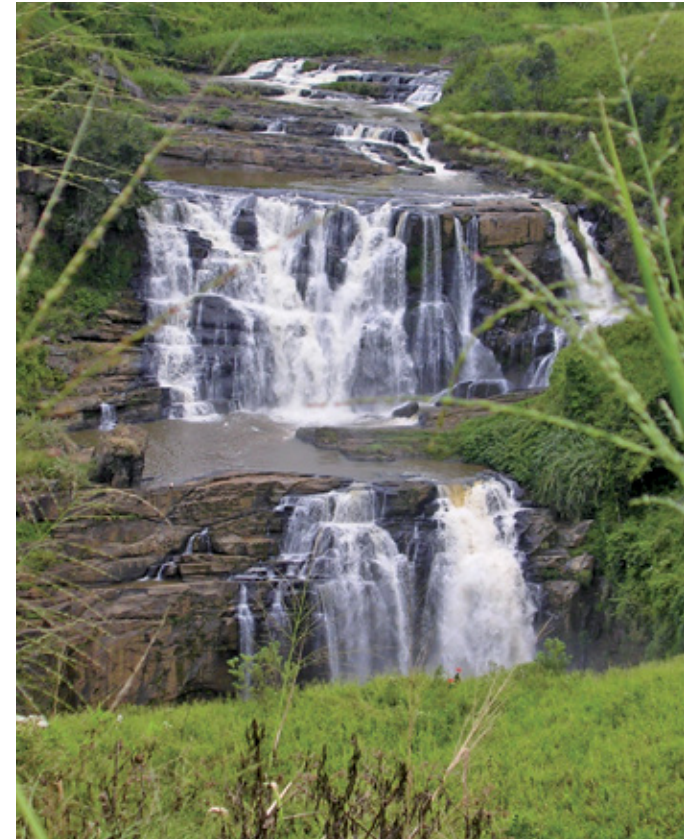




## EXPERIENCES IN AND AROUND EXCURSION

Birdwatching Trail & Hike  
Cycling Tour  
Cookery Demonstration  
Kandyan Dancing Lessons





## OUTDOOR EXCURSIONS

### Trekking

Hanthana Mountain Range  
Knuckles Mountain Range  
Hunnasgiriya Mountain

### Gardens

Peradeniya Botanical Garden

### Religious Excursions

Temple of the Tooth Relic  
Gadaleeniya Temple  
Embekka Devalaya  
St. Paul's Cathedral

### Town Visits

Kandy Mahiyangana

### Waterfalls

Hunnas Falls  
Devon Falls  
St. Clair's Falls  
Ramboda Falls  
Ravana Falls

### Tea Factories

Ceylon Tea Museum  
Kadugannawa Tea Factory  
Embilmeegama Tea Factory  
Oodewella Tea Factory  
Halpe Tea Center  
Udayakanda Tea Factory

### Other

Bogambara Prison  
Udawatta Forest  
Garrison Cemetery  
Victoria Dam  
Randenigala Dam  
Pinnawala Elephant Orphanage  
Kandy Spice Garden  
Ambuluwawa





**Jetwing**  
**SUSTAINABILITY**  
CREATING A BUTTERFLY EFFECT

#### CLIMATE ACTION

We run on solar energy, using photovoltaic systems for electricity and thermal systems for hot water. We also host an electrical vehicle charging station to support guests' low-emission transportation needs.

#### RESOURCE EFFICIENCY

Our closed-loop system minimizes waste and maximizes resources. A biogas digester transforms food waste into renewable cooking fuel, and an effluent treatment plant recycles wastewater, nourishing our gardens.

#### HERITAGE STEWARDSHIP

We celebrate Sri Lanka's heritage, both natural and cultural. Our hotel features intricate sculptures of Kandy Perahera performers and stunning laaksha art, all crafted by local artisans; while our gardens follow traditional Kandyan Home Gardening, an agro-forestry practice unique to the Kandyan region.

#### THRIVING COMMUNITY

We're deeply rooted in the local community with many of our team members having benefited from the Jetwing Youth Development Programme (JYDP), which empowers young people to build successful careers in hospitality.

#### IMPACT SOURCING

Our commitment to local sourcing is evident in our menus, which exclusively feature local fruits, vegetables, and seafood. We prioritize produce from our organic gardens and have eliminated single-use plastic water bottles, opting for reusable glass bottles sourced from our sister property, Jetwing Lake.





## CURRENCY

Sri Lankan Rupees and all other major currencies and credit cards are accepted. Currency conversion facilities are available.

## WEATHER

Average temperatures in Kandy fluctuate between 19°C and 31°C throughout the year, depending on the season.

---

**JETWING KANDY GALLERY, A LUXURY RESERVE**  
Kandy, Sri Lanka

T: +94 81 203 4000

E: [resv.kandy@jetwinghotels.com](mailto:resv.kandy@jetwinghotels.com)

General Manager: Mr. Upul Leukebandara

### CORPORATE OFFICE

Jetwing Hotels Ltd

Jetwing House II, 46/26, Nawam Mawatha  
Colombo 02, Sri Lanka

T : + 94 11 234 5700

E : [sales@jetwinghotels.com](mailto:sales@jetwinghotels.com)

W : [www.jetwinghotels.com](http://www.jetwinghotels.com)

**Jetwing**  
**HOTELS**  
SRI LANKA



@jetwingkandygallery