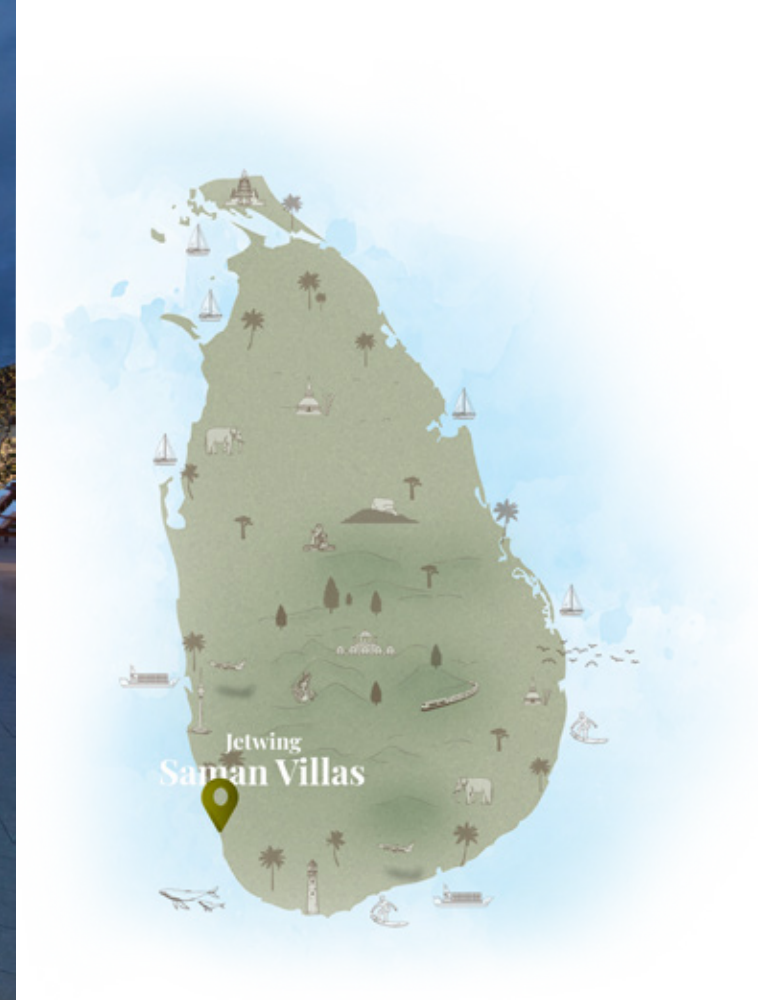


An aerial photograph of the Saman Villas resort, a luxury property nestled on a rocky peninsula. The resort features several white buildings with terracotta roofs, a large swimming pool, and lush tropical landscaping with palm trees. The property is surrounded by a dense forest of palm trees and other tropical vegetation. In the background, a vast expanse of water stretches towards the horizon, with distant hills visible under a warm, golden sunset sky. The foreground shows the ocean with white waves crashing against the rocky shore.

Jetwing
SAMAN VILLAS
A Luxury Reserve



INTRODUCTION

Perched atop a sprawling hillock overlooking the Indian Ocean, Jetwing Saman Villas is Sri Lanka's premier boutique hotel, embodying the ultimate expression of an exclusive and idyllic seaside paradise. Surrounded by mesmerising stretches of secluded, pristine beach, Jetwing Saman Villas features elegantly designed suites with spectacular views of the ocean. Our lush gardens, gourmet cuisine, and tranquil spa complete an experience of perfect indulgence and absolute luxury. This paradise is exclusively for adults, with suites thoughtfully designed to accommodate a maximum of two guests aged 18 and above, ensuring a peaceful and exclusive retreat for all our visitors.

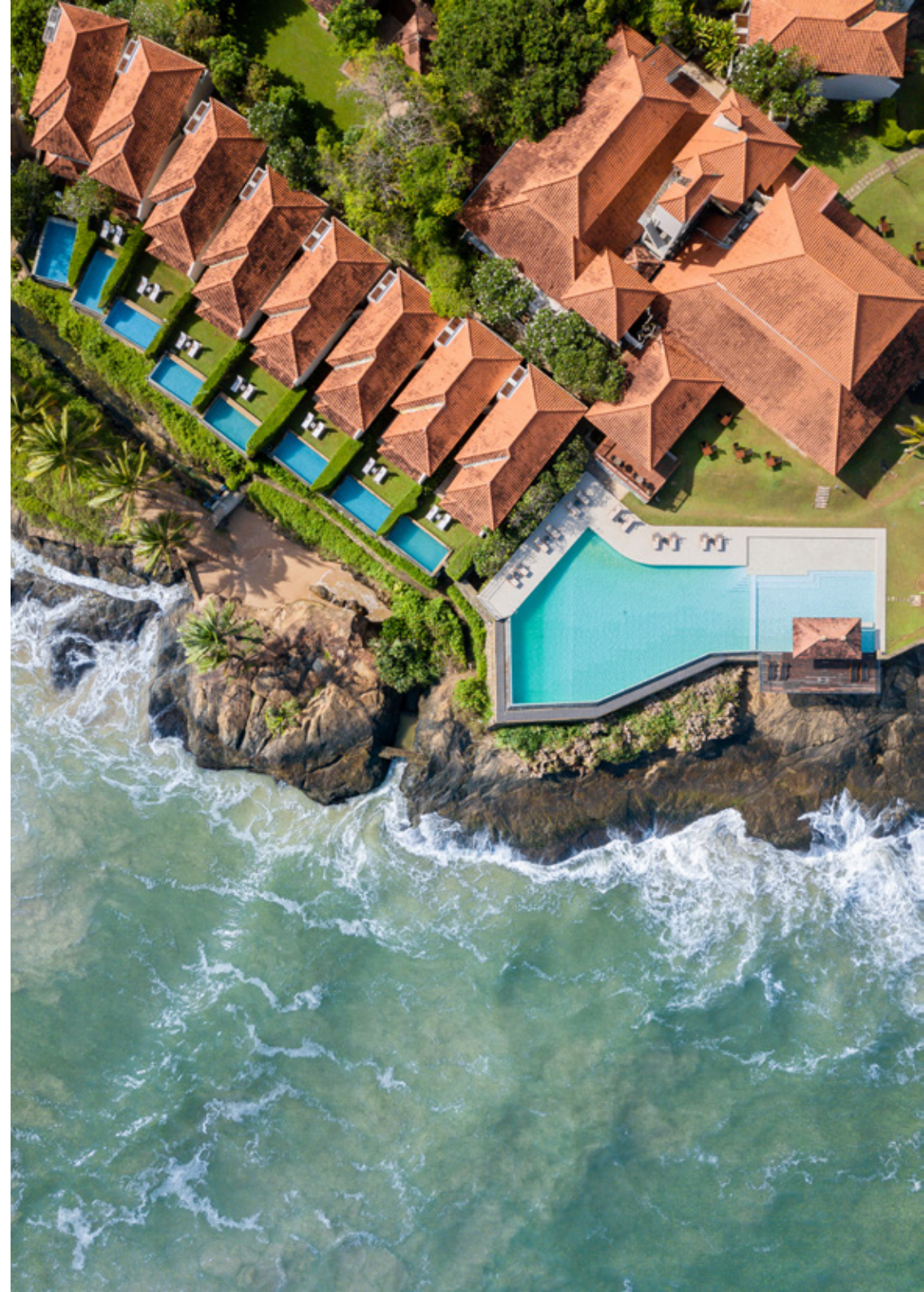
LOCATION

Jetwing Saman Villas is located on the west coast of Sri Lanka and is the perfect setting for a romantic escapade. Situated 92 km from the Bandaranaike International Airport, it will take 2 hours and 30 minutes to reach the destination if the scenic coastline road is taken while the highway will take 1 hour and 45 minutes.

SUITES

The elegantly furnished suites are housed in two-story ocean-view villas situated on either side of the rocky headland. The hotel's unique design ensures that all 27 luxurious suites offer sweeping views of the mesmerising ocean and are bathed in the refreshing salty breeze. Each suite is thoughtfully designed to provide a sense of seclusion. Impeccably appointed with wooden interiors, Italian leather furniture, and state-of-the-art amenities, each suite exudes refined comfort. our Deluxe Suites include plunge pools, while both The Grand Deluxe Suite and The Saman Villa Suite boast private plunge pools, ensuring absolute privacy.

Total number of suites - 27



SUPERIOR SUITE – UPPER FLOOR

Embrace unparalleled luxury in our Superior Suite, where every detail is crafted for indulgence. Revel in expansive balconies that offer stunning, uninterrupted views of the Indian Ocean. Relax in the elegantly furnished outdoor seating area, perfect for unwinding while soaking in the serene panorama.

NUMBER

13

AREA

Balcony area - 14sqm
Bedroom area - 13sqm
Dressing room - 6.71sqm
Bathroom area - 15.47sqm
Living area - 12.82sqm
Entrance area with stairway - 11sqm
Total - 73sqm



SUPERIOR SUITE – GROUND FLOOR

These Superior Suites presents a tranquil retreat with sweeping views of the Indian Ocean and verdant tropical gardens. The suite’s terrace invites sunny relaxation, offering a serene setting where you can unwind amidst natural beauty and comfort.

NUMBER	04
AREA	Terrace area - 18sqm Bedroom area - 13sqm Dressing room - 6.54sqm Bathroom area -16.31sqm Living area - 12.15sqm Room garden with pocket garden -55sqm Total - 121sqm



DELUXE SUITE WITH POOL

Indulge in refined luxury with our Deluxe Suite, featuring a plunge pool. This suite provides exceptional comfort and spectacular ocean views, allowing you to relax in your own intimate oasis.

NUMBER

08

AREA

- Terrace area - 18sqm
- Bedroom area - 18sqm
- Dressing room - 6.59sqm
- Bathroom area -16.52sqm
- Living room - 11.89sqm
- Plunge pool + terrace - 25sqm
- Room garden area - 79sqm
- Total - 175sqm**



GRAND DELUXE SUITE WITH POOL

Nestled in the southern corner of our coastal haven, the Grand Deluxe Suite is a sanctuary of elegance and privacy. This suite boasts a secluded lap pool with stunning ocean views, complemented by spacious sun decks and tasteful wooden furniture. Its generous living areas are crafted to offer unparalleled relaxation and indulgence.

NUMBER	01
AREA	Terrace area - 18sqm Bedroom area - 13sqm Dressing room - 6.82sqm Bathroom area -17.70sqm Living room - 13.48sqm Plunge pool + terrace- 57sqm Room garden - 49sqm Total - 175sqm



SAMAN VILLA SUITE

Discover romantic seclusion in our Saman Villa Suite, a luxurious duplex retreat designed for ultimate privacy. With expansive interiors, panoramic ocean views, and a private plunge pool, this suite is a haven of elegance. Every modern convenience is at your fingertips, ensuring a stay of unmatched comfort and sophistication.

NUMBER	01
AREA	Terrace area - 18sqm Balcony area - 11sqm Bedroom area - 27sqm Dressing room - 6.83sqm Bathroom area (ground) - 18.05sqm Bathroom area (upper) - 6sqm Living area - 17.09sqm Plunge pool + terrace - 37.03sqm Room garden - 57sqm Total - 198sqm





SUITE FACILITIES

- Panoramic ocean view from your suite
- Balcony with day bed, dining furniture, plantation chair and classic fan
- Living area with luxurious Italian leather furniture
- State of the art high quality home-theatre system with surround sound
- Mobile device charging facility
- Well stocked mini bar
- Sleeping deck with Slumberland President Suite king size mattress with 1056 comfort plush pocketed springs and pillow top
- Choice of pillows (Simmons Beautyrest head and neck care pillows, deep sleep pillows and gel pillows)
- Decorative room lighting with mood lighting
- Motorized curtain with bedside controller
- Ultra quiet air-conditioning
- Dressing room with spacious wardrobe
- Electronic safe
- Bathrobes and slippers
- Hair dryer
- Spectacular bathroom with free standing marble bathtub and calming water feature

- Outdoor rain sky shower and indoor dual mode rain shower with cutting-edge thermostatic smart flow controllers
- Body and bath amenities
- Twin washbasins laid on luxurious timber counter
- 24-hour room service
- Wi-Fi facility
- Tea and coffee making facility
- Bottled water

SUITE FACILITIES ON REQUEST

- Library with books for lending and reference
- Iron and ironing board
- Shoe shining service



DINING

Jetwing Saman Villas offers a diverse selection of dining experiences. You may choose to dine in the cozy elegance of our restaurant, out beneath the stars, on a moonlight-drenched beach, or perched on a rock as the waves break beneath you. Other unique dining locations include the pool pavilion overlooking the ocean, the privacy of your own suite, or in a water garden or tropical garden setting at our spa.



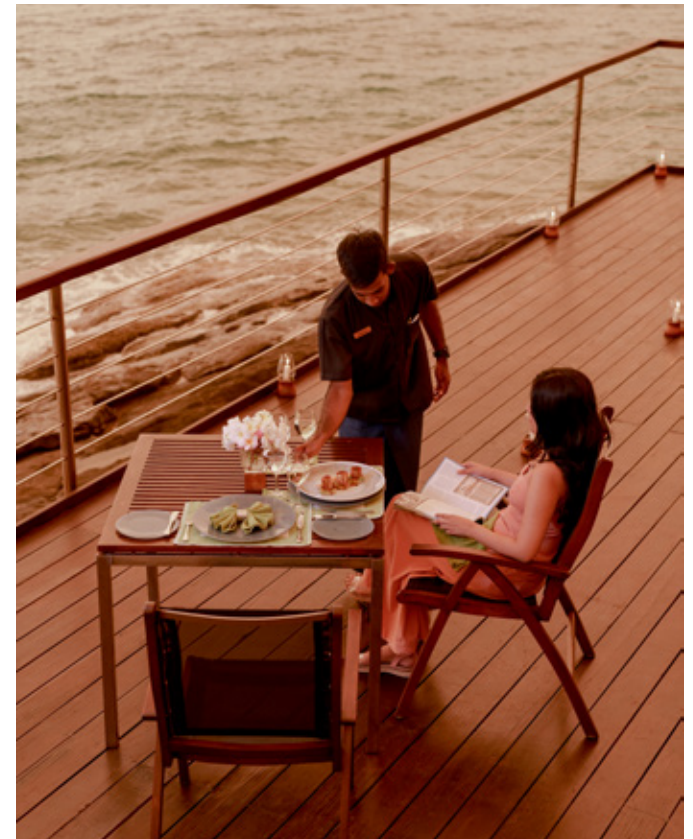
DINING SPACES

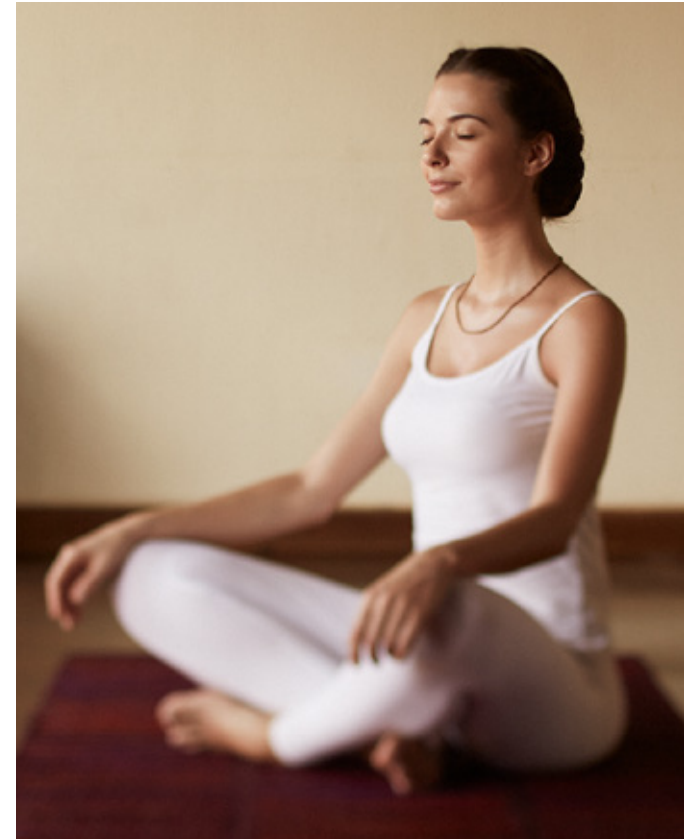
- Open plan fine dining restaurant
- Ocean facing sofa dining
- Alfresco dining
- The Verandah
- Pool bar
- Lounge Bar - Beside the pool with views of different shades of blue from the sea and pool
- Sunset Lounge - Upper floor bar with panoramic views of the coast and the central hills



ROMANTIC SIGNATURE DINING

Indulge in an exquisite culinary journey where each dining experience is framed by its unique setting. At Jetwing Saman Villas, our signature options provide the perfect backdrop to savour exquisite dishes crafted by our exceptional chefs. Amidst the soothing sounds of the ocean and the rustle of lush gardens, immerse yourself in the romance of Deck Dining, the serenity of the Garden Pavilion, the classic charm of Mangala Pavilion, or the breathtaking vistas of Rock Dining perched on the cliff's edge. Each setting offers a distinctive atmosphere, enhancing your dining with unparalleled tranquillity and romance.





WELLNESS

Nestled in a naturally serene and picturesque setting, Jetwing Saman Villas is an oasis of tranquility and luxury overlooking the azure waters of the Indian Ocean. Embrace the soothing ambience of our coastal retreat as you embark on a journey of holistic wellness. Our Sahana Spa, renowned as one of Sri Lanka's most exclusive spa experiences, offers an exceptional retreat designed to nurture your mind, body, and soul. Whether you seek rejuvenation through traditional therapies, relaxation with a dip in our infinity pool, or a refreshing workout at our gym, our dedicated team ensures your stay is one of serene fulfilment and revitalised energy.



OUTDOOR ACTIVITIES AND EXCURSIONS

Archaeological Sites

Galle Fort (UNESCO World Heritage Site)

Religious Excursions

Kande Viharaya - Buddhist and Hindu Temple

Bawa Sites

Brief Garden

Lunuganga

Nature Excursions

Maduganga River Safari

Sinharaja Forest Reserve

Turtle Conservation Project

Whale and Dolphin Watching

Deep Sea Fishing

Kanneliya

Water Sports

Scuba Diving

Snorkeling

Other Excursions

Cinnamon Peeling Centers

Cycling

Walking Trails

Fish Market



CURRENCY

Sri Lankan Rupees and all other major currencies and credit cards are accepted.

WEATHER

Average temperature in Bentota hover between 26°C and 30°C throughout the year, depending on the season.

JETWING SAMAN VILLAS, A LUXURY RESERVE
Aturuwella, Bentota, Sri Lanka

T : +94 34 227 5435 | +94 34 720 0334
E : resv.samanvillas@jetwinghotels.com
Deputy General Manager : Mr. Farrel Blom

CORPORATE OFFICE
Jetwing Hotels Ltd
Jetwing House II, 46/26, Nawam Mawatha
Colombo 02, Sri Lanka

T : + 94 11 234 5700
E : sales@jetwinghotels.com
W : www.jetwinghotels.com

Jetwing
HOTELS
SRI LANKA



@jetwingsamanvillas