



Jetwing

WARWICK GARDENS  
A Luxury Reserve

*A mesmerising tea country hideaway*





## INTRODUCTION

Jetwing Warwick Gardens lies 5782 feet above sea level. It is gifted with all nature's bounties and is cradled amidst green clad mountains enriched with tea estates that can be witnessed on the narrow and winding road up to the bungalow. This unique Edwardian style bungalow which was once the dwelling of a Scottish tea planter was restored to its original old charm and warmth.

The bungalow consists of five well appointed rooms, library, dining hall, open terraces and gardens, with the comfort of every modern convenience alongside the more traditional delights.

## LOCATION

The drive up to the hotel is a scenic one, with lush greenery, waterfalls, tea plantations and majestic mountains. It is approximately 200 Km (6 hours) from the Bandaranaike International Airport, and within a land area of 30 acres and surrounded by 1200 acres of tea plantation.

## OUR ROOMS

Maintaining the charm and elegance of its colonial past, the five bedrooms at Jetwing Warwick Gardens are gracefully styled and furnished to create a space reflective of the history of the house. These thoughtfully curated spaces are equipped with host of modern amenities and ensuite bathrooms to enhance your stay in the hills.

Total number of rooms - 05





## MASTER ROOM

Our Master Suite features a grand four poster bed, an open fireplace and expansive windows that frame views of the garden and the valley beyond. Thoughtfully designed with modern amenities, including an individual heating unit, the suite ensures warmth and comfort amid the cool highland breez.

NUMBER

01

AREA

Bedroom - 31.6 sqm

Bathroom - 14.5 sqm

**Total - 46.1 sqm**



## WHITE ROOM

Dressed in a pristine coat of white, our spacious suite features a king size bed fitted with an individual heating unit, as well as an expansive bathroom with a hot and cold shower for a restful stay. With its soft hues décor and graceful simplicity, this room exudes peace, offering a serene retreat in the heart of the highlands.

NUMBER

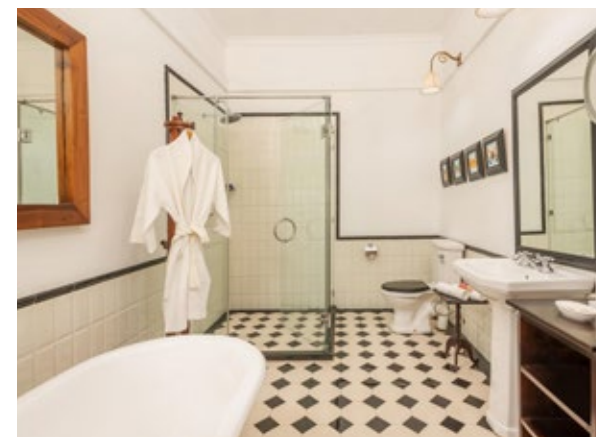
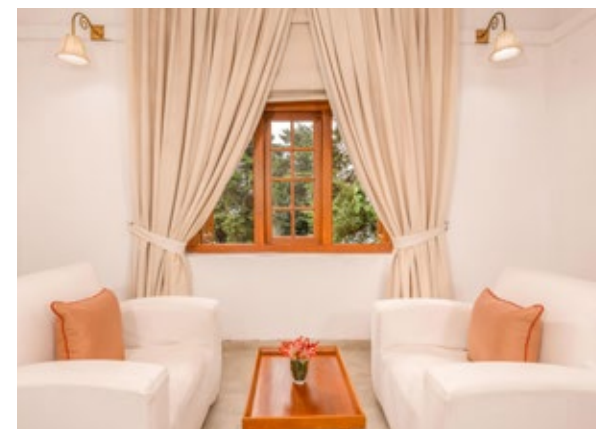
01

AREA

Bedroom - 27.3 sqm

Bathroom - 9.7 sqm

**Total - 37 sqm**





## GLENOCH

The room is thoughtfully decorated in classic wooden accents, vintage furniture, and soft linens to create a welcoming atmosphere. Surrounded by the serene beauty of the hills, our room will allow you to relax in perfect harmony with the surroundings.

NUMBER

01

AREA

Bedroom - 21.5 sqm

Bathroom - 10.8 sqm

**Total - 32.3 sqm**



## OAKLEIGH

Tucked away in a cosy corner, our room features a plush king-sized bed, antique wooden furnishings, and delicate accents offering the perfect blend of comfort and elegance designed for pure relaxation.

NUMBER

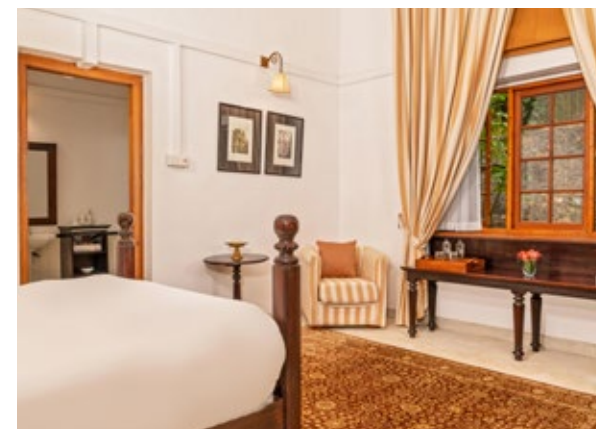
01

AREA

Bedroom - 20.8 sqm

Bathroom - 7.4 sqm

**Total - 28.2 sqm**





BREAMEAR

Adorned with warm wooden tones, this inviting space features twin beds, elegant furnishings, and an en-suite bathroom equipped with modern amenities. Awaken to the soothing sights of nature, unwind in peaceful solitude, and embrace the simple pleasures of the highlands.

NUMBER

01

AREA

Bedroom - 19.6 sqm  
Bathroom - 8.4 sqm  
**Total - 28 sqm**





## ROOM FACILITIES

- Rain showers
- Hot and cold water
- Custom-made toiletries created by Link Natural
- Electric power 220v – 240v
- Tea/coffee making facility
- Bottled water
- Electronic safe
- Bathtub in 03 rooms
- Wood burning fireplace in all rooms except the White Room

## ROOM FACILITIES ON REQUEST

- Hair dryer
- Baby cots

## GUEST FACILITIES

- Room service
- Library
- TV lounge and DVD library
- Parking facilities
- Laundry
- Doctor on call
- Butler service
- Piano in the living room
- Chess and other board games
- Well stocked bar • Safety locker at reception







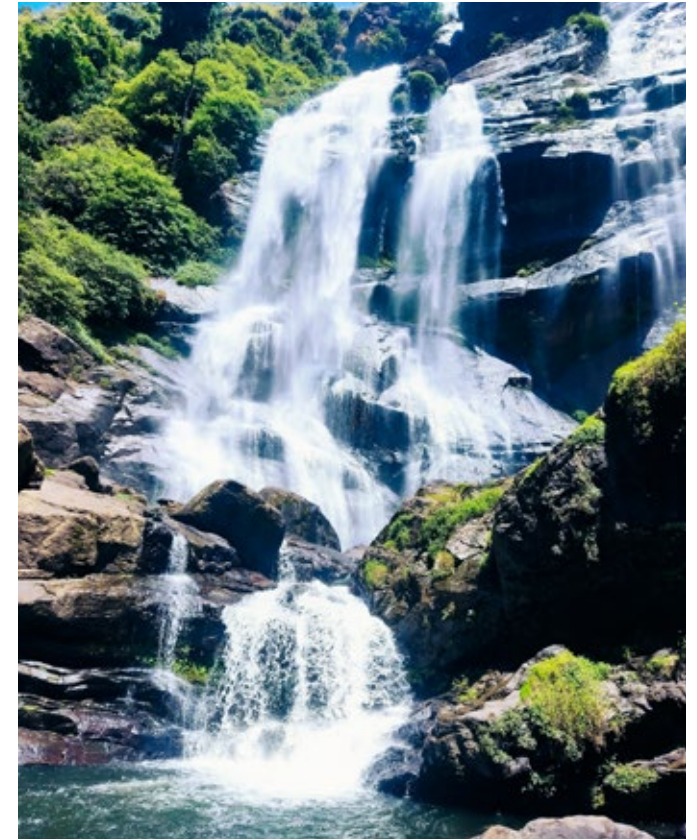
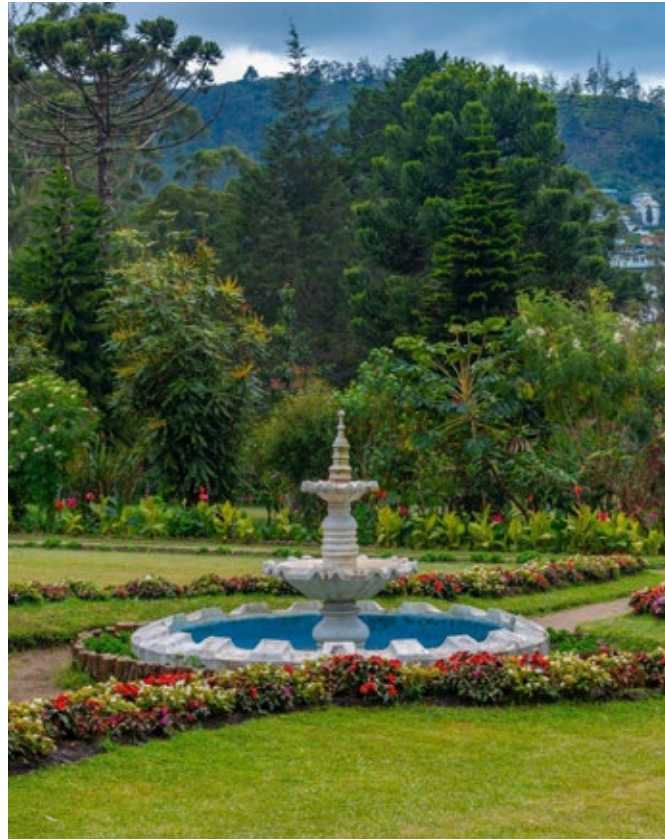
## DINING

Indulge in a symphony of flavours at Jetwing Warwick Gardens, where every meal is an experience to savour. Enjoy a romantic BBQ dinner on the lawn, a hearty English breakfast in bed with fresh eggs from our farm. Be it global favourites or local specialities, our chef will curate exquisite culinary dishes tailored to your preference.

## SIGNATURE DINING

- Campfire dining
- Garden BBQ
- Alfresco dining
- Picnic
- High tea





## OUTDOOR ACTIVITIES AND EXCURSIONS

### In house Excursions

Warwick Uva Trail

In house Farm

### Botanical Gardens and Parks

Peradeniya Botanical Gardens

Hakgala Botanical Gardens

Victoria Park

### Trekking

Horton Plains National Park

Pidurutalagala (Mount Pedro)

Knuckles Mountain Range

Kirigalpotha Adam's Peak

Belihuloya, Hunnasgiriya

Cloud Forest Trail and 13 short trails  
around the bungalow

### Farms

Ambewela Farm and New Zealand Farm

### Waterfalls

Devon Falls

St. Clair's Falls

Ramboda Falls

Ravana Falls





## ARTISANAL TEA EXPERIENCE

If you are fascinated by the art of crafting artisanal tea, our butler will take you on a guided tour through our lush tea fields and our artisanal tea factory, which offers a glimpse into the process, from plucking tender tea leaves to crafting exquisite teas using age-old methods. Conclude your experience with a delightful tea-tasting session, savouring the unique flavours of our handcrafted teas.





## CURRENCY

Sri Lankan Rupees and all other major currencies and credit cards are accepted. Currency conversion facilities are available.

## WEATHER

The temperature in Ambewela varies from 5°C to 30°C especially between day and night and on a seasonal basis.

---

**JETWING WARWICK GARDENS,  
A LUXURY RESERVE**  
Ambewela, Sri Lanka

T: +94 63 203 0300

E: [resv.warwickgardens@jetwinghotels.com](mailto:resv.warwickgardens@jetwinghotels.com)

Bungalow Manager: Mr. Gayan Vithanage

### CORPORATE OFFICE

Jetwing Hotels Ltd

Jetwing House II, 46/26, Nawam Mawatha

Colombo 02, Sri Lanka

T : + 94 11 234 5700

E : [sales@jetwinghotels.com](mailto:sales@jetwinghotels.com)

W : [www.jetwinghotels.com](http://www.jetwinghotels.com)

**Jetwing**  
**HOTELS**  
SRI LANKA



@jetwingwarwickgardens